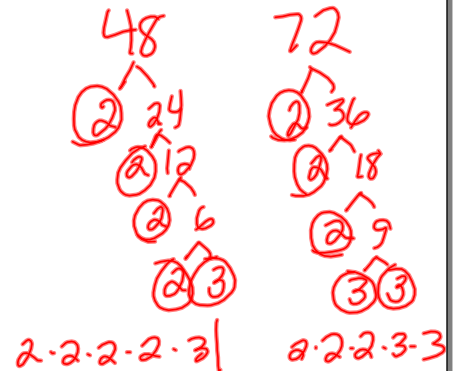


Finding the Least Common Denominator (Multiple)

Example: 48, 72

Step 1:

Factor each number
(or denominator)



Step 2:

Write in exponent form.

$$2^4 \cdot 3 \quad | \quad 2^3 \cdot 3^2$$

Step 3:

Write each factor once
("big numbers")

$$2 \cdot 3$$

Step 4:

Write the HIGHEST
exponent of each factor

$$2^4 \cdot 3^2$$

Step 5:

Simplify

$$16 \cdot 9$$

144