

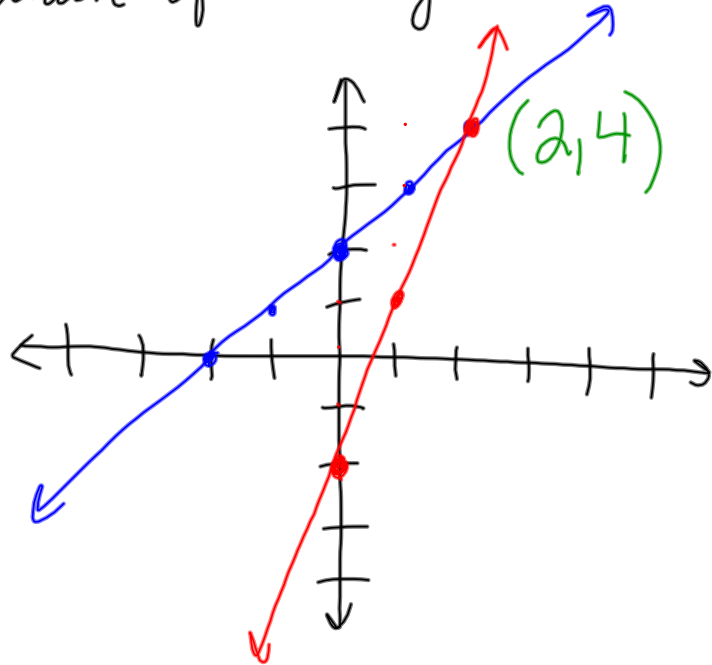
Sec. 6.1 Solving Systems by Graphing

What is the solution of the system?

$$\textcircled{1} y = x + 2$$

$$\textcircled{2} y = 3x - 2$$

$$m = \frac{3}{1} = \frac{\Delta y}{\Delta x}$$



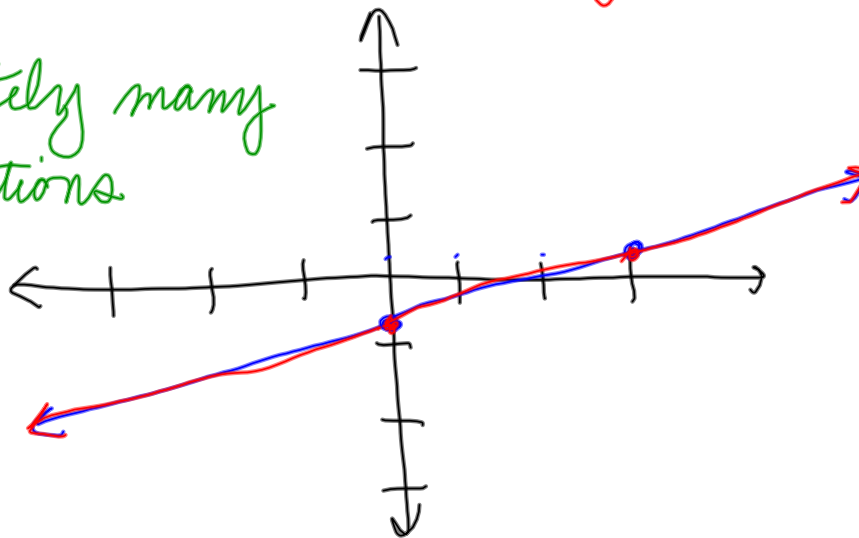
$$b. \frac{3y}{3} = \frac{x-2}{3} - \frac{2}{3}$$

$$y = \frac{1}{3}x - \frac{2}{3}$$

$$-6y = -2x + 4$$

$$y = \frac{1}{3}x - \frac{2}{3}$$

infinitely many solutions



c. ① $y = 5x - 6$
② $y = 5x + 4$

no solution

