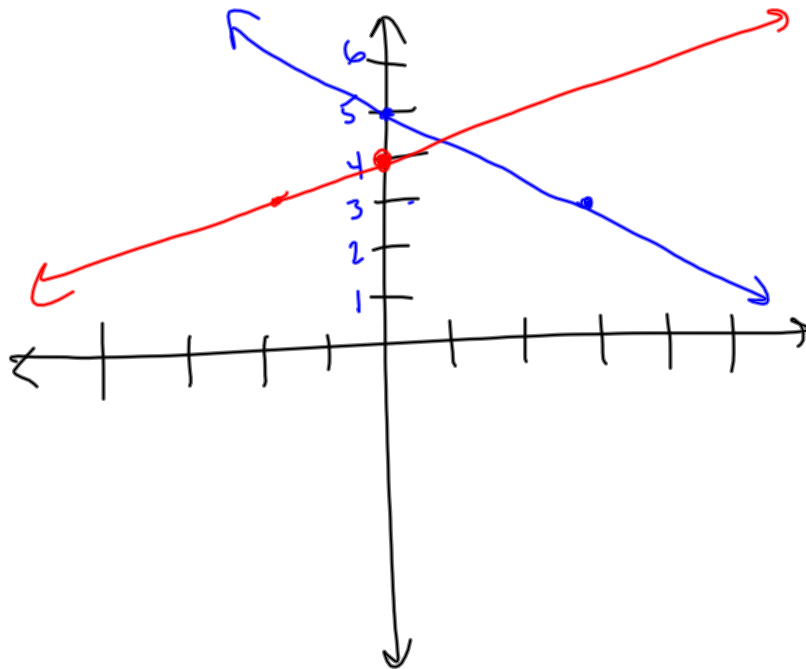
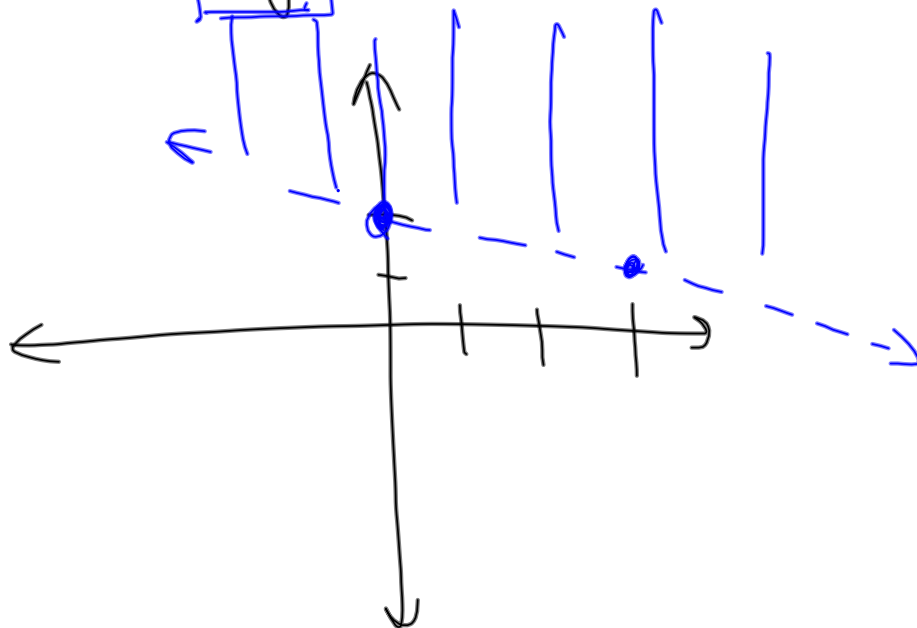


1. Write an equation in slope-int. form.



2. Graph $y = \frac{2}{5}x - 4$

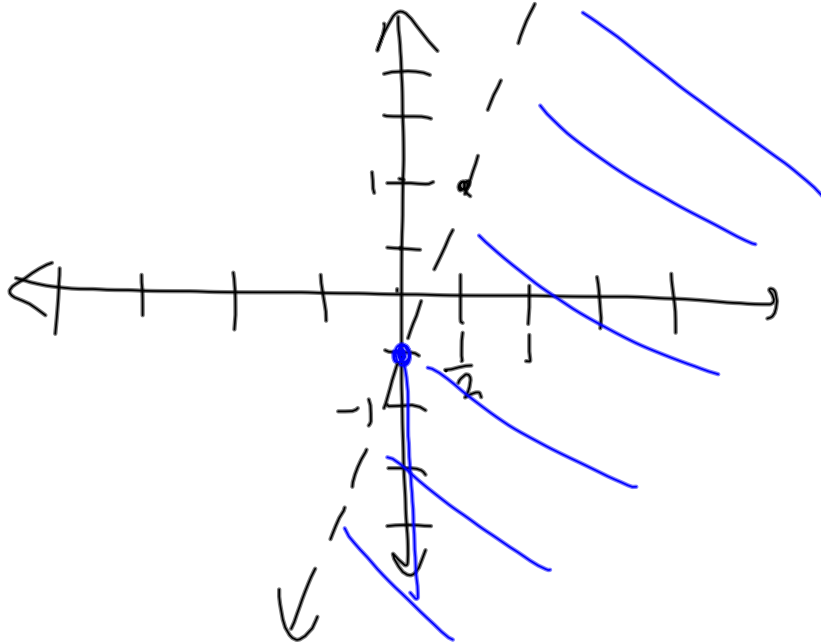
3. Graph $y = -\frac{1}{3}x + 2$



4. Graph

$$y < 3x - \frac{1}{2}$$

$0 < -\frac{1}{2} F$ $(0,0) F$

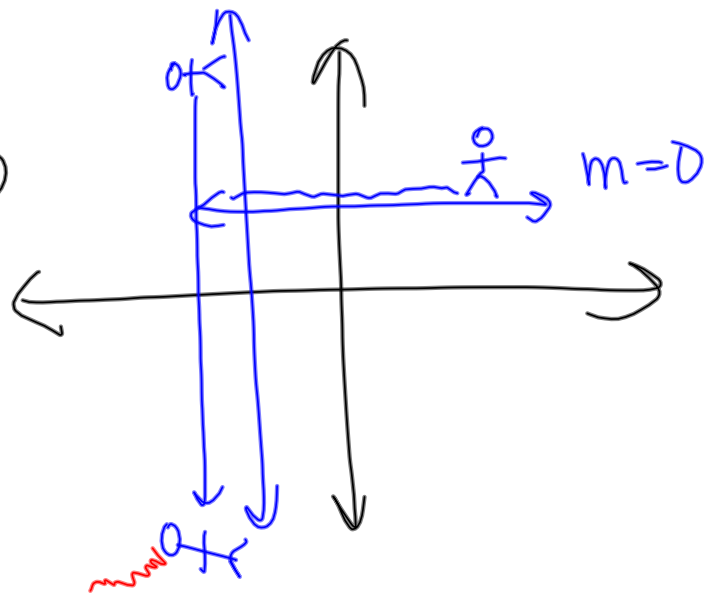


5. Graph

$$y = 7$$

$$x = -3$$

HOY



Graph

$$y - y_1 = m(x - x_1)$$

$$y - 2 = 3(x + 1)$$

$$(-1, 2)$$

$$m = \frac{3}{1}$$

