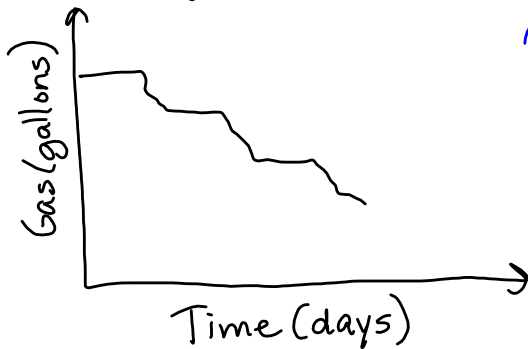


Sec. 4.1 Using Graphs to Relate Two Quantities

Problem 1: The graph below shows the amount of gasoline in Jamie's car after she fills up her tank. What are the variables? Describe how they are related at various points on the graph.

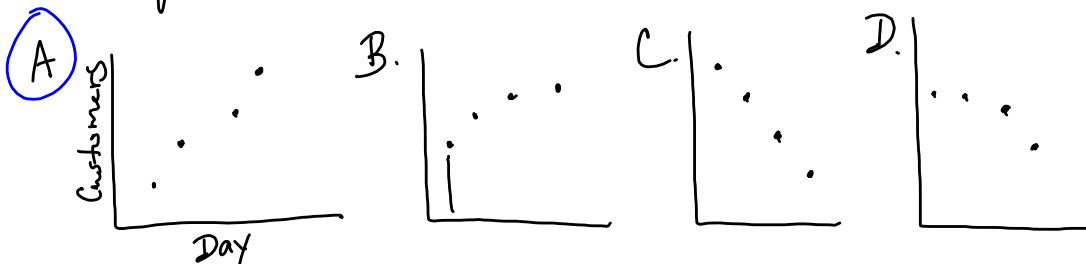


variables:
 time (in days)
 gas (in gallons)
 The amount of gas decreases each time Jamie drives somewhere and remains constant when she's not driving.

Problem 2:

Day	Total Customers
1	61 > 64
2	125 > 52
3	177 > 65
4	242

Graph the data shown



Problem 3: Malcolm increases his speed on the treadmill until he reaches a certain level. Then he jogs at this level for several minutes. Then he slows to a stop and stretches. After this, he increases to a speed slightly lower than before and jogs at that speed for a short while before slowing to a stop again. Sketch and label.

